

# MONTHLY MEMBERSHIP PROGRESS REPORT

District 3231A2

Results as of: 10/31/2024

GMT:

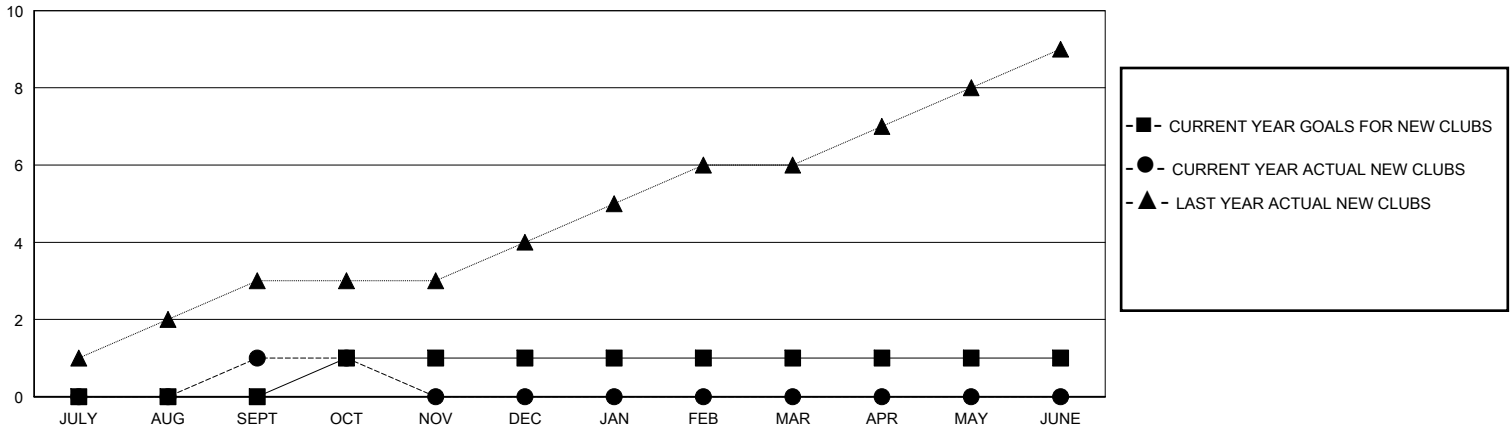
LOCATION INDIA

GMT CA

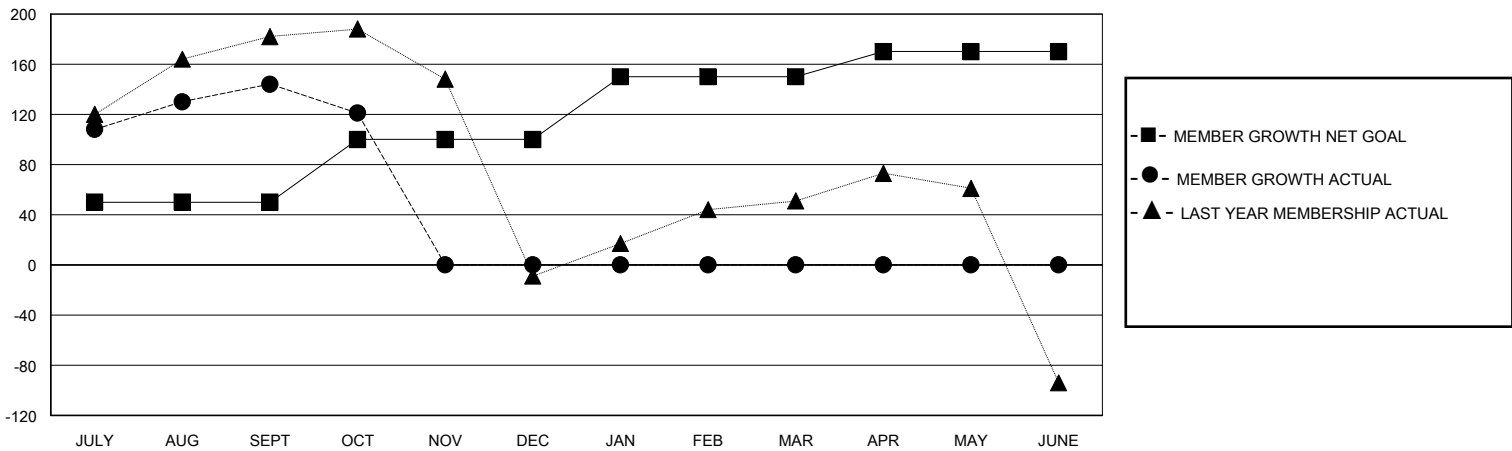
Clubs			
RESULTS FOR 2024-2025			
QUARTER	NEW CLUB GOAL	NEW CLUBS	DROPPED CLUBS
JULY/AUG/SEPT	0	1	1
OCT/NOV/DEC	1	0	0
JAN/FEB/MAR	0	0	0
APR/MAY/JUNE	0	0	0

Members			
RESULTS FOR 2024-2025			
QUARTER	MEMBER GROWTH NET GOAL	MEMBER GROWTH ACTUAL	DROPPED MEMBERS ACTUAL (including transfers)
JULY/AUG/SEPT	50	187	32
OCT/NOV/DEC	50	16	39
JAN/FEB/MAR	50	0	0
APR/MAY/JUNE	20	0	0

GOALS AND ACTUAL NEW CLUBS CUMULATIVE



GOALS AND ACTUAL MEMBERS CUMULATIVE



DROPPED CLUBS: 1	29 CLUBS OF 69 ADDED 1 OR MORE NEW MEMBERS	<u>GENDER DISTRIBUTION</u>	
		MALE	1,446 (60.71%)
		FEMALE	936 (39.29%)
<u>DROPPED MEMBERS</u>		TOTAL FAMILY UNIT MEMBERS	0
DECEASED	1	FAMILY MEMBERS PAYING HALF DUES	0
CLUB CANCELLED	7		
OTHER	63		
<b>TOTAL</b>	<b>71</b>		

[CLICK HERE FOR CUMULATIVE MEMBERSHIP DATA](#)